

Versilon™ Rubber, Silicone & PVC Hose and Fitting Selection Guide



Saint-Gobain Versilon™ Rubber, Silicone & PVC Hose and Fittings Selection Guide

Table of Contents

Versilon™ Rubber Hose Styles	p. 2
Versilon™ Silicone Hose Styles	p. 3
Versilon™ PVC Hose Styles	p. 4
Versilon™ ReSeal® Reusable Fitting End Connections	p. 4
Versilon™ Permanent Crimp Style Fitting End Connections	p. 5
Sanitary	p. 5
Flanged Connections	p. 5
Male Cam & Groove	p. 5
Female Cam-Lock (Cam & Groove)	p. 6
NPT	p. 6
Unions/Female JIC	p. 6

Versilon™ Rubber Hose Styles

PSD

White chlorobutyl lined suction and discharge EPDM rubber hose

Size range : 1/2" to 6" ID

Temperature rated : -40°F to +225°F
(continuous),
+250°F
(intermittent)

End connections : ReSeal® reusable; Permanent crimp style



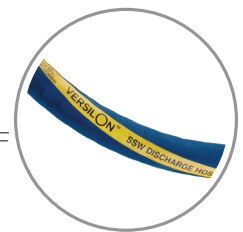
SSW

White chlorobutyl lined softwall discharge EPDM rubber hose

Size range : 1-1/2" to 3" ID

Temperature rated : -40°F to +225°F
(continuous),
+250°F
(intermittent)

End connections : ReSeal® reusable; Permanent crimp style



GCR

Santoprene rubber lined crush resistant EPDM rubber hose

Size range : 1-1/2" to 4" ID
Temperature rated : -40°F to +225°F (continuous), +250°F (intermittent)

End connections : ReSeal® reusable; Permanent crimp style

**FGR**

White nitrile-PVC blend lined food grade EPDM rubber hose

Size range : 1/2" to 4" ID
Temperature rated : -40°F to +250°F
End connections : Permanent crimp style

**G-FDA**

White EPDM lined high temperature suction and discharge EPDM rubber hose

Size range : 1/2" to 4" ID
Temperature rated : -40°F to +300°F
End connections : Permanent crimp style

**MHH**

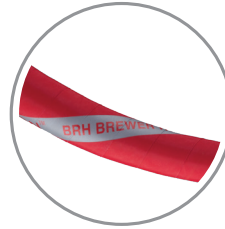
White chlorobutyl lined rubber milk hauler hose

Size range : 51.0 mm to 76.0 mm ID
Temperature rated : -40°F to +190°F
End connections : ReSeal® reusable

**BRH**

White chlorobutyl lined EPDM rubber brewer hose

Size range : 1" to 3" ID
Temperature rated : -22°F to +222°F
End connections : ReSeal® reusable; Permanent crimp style

**XFR**

White bromobutyl lined extra-flexible suction and discharge hose

Size range : 1" to 3" ID
Temperature rated : -40°F to +248°F
End connections : ReSeal® reusable; Permanent crimp style



Versilon™ Silicone Hose Styles

SPD

Single-ply polyester braid reinforced silicone hose

Size range : 1/4" to 1-1/2" ID
Temperature rated : -80°F to +350°F
End connections : ReSeal® reusable; Permanent crimp style

**FPD**

Four-ply polyester braid reinforced silicone hose

Size range : 1/2" to 3" ID
Temperature rated : -80°F to +350°F
End connections : ReSeal® reusable; Permanent crimp style

**FPW**

Four-ply polyester braid and wire reinforced silicone hose

Size range : 1/2" to 3" ID
Temperature rated : -80°F to +350°F
End connections : ReSeal® reusable; Permanent crimp style



Versilon™ PVC Hose Styles

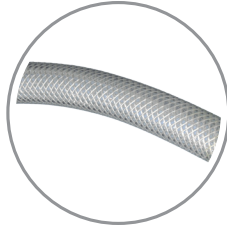
CBT

Polyester inner braid reinforced PVC hose

Size range : 1/2" to 2" I.D.

Temperature rated : +25°F to +150°F

End connections : ReSeal® reusable; Permanent crimp style



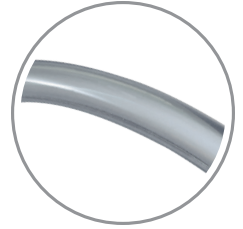
CCT

Non reinforced PVC hose

Size range : 1/2" to 2" I.D.

Temperature rated : +25°F to +150°F

End connections : ReSeal® reusable; Permanent crimp style



CSS

Steel wire reinforced PVC hose

Size range : 1/2" to 3" ID

Temperature rated : +25°F to +150°F

End connections : ReSeal® reusable; Permanent crimp style



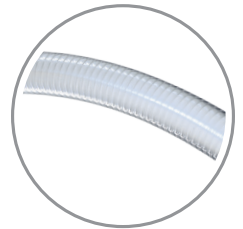
CSC

Clear helix reinforced PVC hose

Size range : 1" to 4" ID

Temperature rated : -4°F to +150°F

End connections : ReSeal® reusable



CSW

White helix reinforced PVC hose

Size range : 1" to 3" ID

Temperature rated : -4°F to +150°F

End connections : ReSeal® reusable



Versilon™ ReSeal® Reusable Fitting End Connections

Fitting material : Grade 316L stainless steel with an average interior surface finish as low as 15 Ra

Hose sleeves : Available in either stainless steel or high impact polymer

End connector styles : Sanitary Clamp (Rubber, silicone and PVC hoses)
 Sanitary Step-Up Sizes (Rubber, silicone and PVC hoses)
 Bevel Seat & Hex Nut (Rubber and PVC hoses)
 Male and Female Cam & Groove (Rubber hoses)
 Male and Female I-Line (Rubber hoses)
 Male Pipe Thread (Rubber, silicone and PVC hoses)
 Tube End (Rubber, silicone and PVC hoses)
 Flange End (Rubber and silicone hoses)



Versilon™ Permanent Crimp Style Fitting End Connections

Sanitary

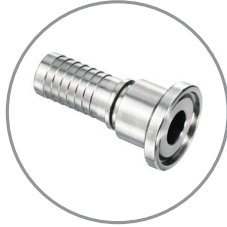
Sanitary clamp style, 316L stainless steel
Style 10



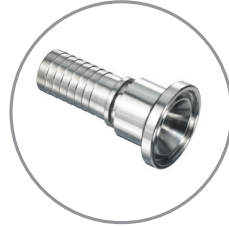
Sanitary “jump” styles clamp style, 316L stainless steel
Style 10U - 1 step up
Style 10UU - 2 steps up



Sanitary “mini”, 316L stainless steel
Style 11



Sanitary “mini” jump size, 316L stainless steel
Style 11U



Bevel seat/nut, 316L stainless steel insert 304 stainless steel nut
Style 20



Sanitary “maxi” size for Sani-Tech® Rigid connections, 316L stainless steel
Style 25



Bevel seat, male threads, 316L stainless steel
Style 40



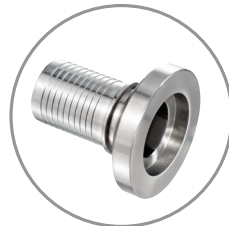
Butt Weld, sanitary tube size 316L stainless steel
Style 41



Male I-line, 316L stainless steel
Style 50



Female I-line, 316L stainless steel
Style 51



Fittings made from other materials such as high nickel alloys and PVDF are available. Contact us for more information.

Flanged Connections Class 150 Lap Joint Flanges Shown • Class 300 Lap Joint Flanges Available

316L Flange retainer with: 304 or 316L lap joint flanges
Style 12S6 - 316L flange
Style 12S4 - 304 flange



Epoxy coated carbon steel lap joint flange
Style 12C - Epoxy carbon steel flange



Male Cam & Groove

316L stainless steel male cam & groove
Style 17 - Male & hose barb same size
Style 17U - Male is one size larger than hose barb



Fluoropolymer encapsulated male cam & groove fittings available on selected hose styles & sizes. Consult factory for availability.

Female Cam-Lock (Cam & Groove)

Female cam-lock, swivel style non-locking arms
316L insert 316 stainless steel body
Style 16



Female cam-lock, swivel style locking and nonlocking arms
"Flare-Thru" option
Style 16FTLK - Locking arms
Style 16FTS6 - Non-locking arms



Female cam-lock swivel style locking arms
316L insert 316 stainless steel body
Style 16LK



Fluoropolymer Flare-Thru female cam & groove fittings available on selected hose styles & sizes. Consult factory for availability.

NPT

Male NPT; 316 L stainless steel hex style
Style 03 - MNPT & hose barb same size



Male NPT jump sizes hex style; 316L stainless steel
Style 03U - Step-up
Style 03D - Step-down 2-1/2" & larger fittings have "wrench flats"
Style 04 - Male NPT, plain



Female NPT
Style 06 - Hex style; 316L stainless steel
Hose barb & female NPT same size
Style 05 - Female NPT, plain



Unions/Female JIC

Male union 316L stainless steel
JIC x male NPT pipe adapter
Style 08 - Hose and MNPT barb same size
Style 08U - Step-up
Style 08D - Step-down



Female union 316L stainless steel
JIC x female pipe adapter
Style 07 - Same size FNPT pipe x hose barb
Style 07U - Step-up
Style 07D - Step-down



Female JIC swivel anti-torque style
316L stainless steel
Style 02HSN - JIC & hose barb same size



Butt Weld, 316L stainless steel "pipe size"
Style 01
Pipe size & hose barb same size, length & pipe schedule can be custom manufactured
Consult factory for availability



Female JIC swivel 316L stainless steel insert, 304 stainless steel swivel nut
Style 02 - JIC & hose barb same size



Regulatory Compliance

Rubber, Silicone and PVC Hoses

Hose Name	FDA Compliant Liner (21 CFR 170-189)	3-A Sanitary Standard 62-02	USDA 9 CFR 317.24	CFIA	US Pharmacopeia Class VI
BRH	•	•	•		
CBT	•	•	•	•	
CCT	•	•	•	•	
CSC	•	•	•		
CSS	•	•	•	•	
CSW	•	•	•		
FGR	•	•	•		
FPD	•	•			•
FPW	•	•			•
G-FDA	•	•	•		
GCR	•	•	•		
MHH	•	•	•		
PSD	•	•	•		
SPD	•	•			•
SSW	•	•	•		
XFR	•	•			

Rubber, Silicone & PVC Hose and Fitting Selection Guide

VERSILON™

Fluid Performance

Premium quality tubing, hoses and fittings fulfilling a range of demanding certification, performance and safety standards.

TYGON®

Excellence By Design

Precision-designed tubing for peak performance and regulatory compliance, across a range of specialized fluid transfer applications.



Saint-Gobain
Life Sciences



Performance Plastics

210 Harmony Road
Mickleton, NJ 08056
USA

Toll Free: 1-800-435-3992

International: +1 (732) 652-0910

www.processsystems.saint-gobain.com

IMPORTANT: It is the user's responsibility to ensure the suitability and safety of Saint-Gobain materials for all intended uses. Laboratory, field or clinical tests must be conducted in accordance with applicable requirements in order to determine the safety and effectiveness for use of materials in any particular application. If intended for medical use, it is the user's responsibility to ensure that the materials to be used comply with all applicable medical regulatory requirements.

Limitation of Liability

Except for products for which Saint-Gobain (SGPPL) has established a specific written warranty, the products described herein are sold by SGPPL without any guarantee and/or warranty, oral or written. User assumes all risk, if any, including the risk of injury, loss or damage, whether direct, consequential or incidental, arising out of the use, misuse or inability to use these products.

SAINT-GOBAIN DISCLAIMS ALL IMPLIED WARRANTIES OF MERCHANTABILITY AND FITNESS FOR A PARTICULAR PURPOSE.

NOTE: Saint-Gobain Corporation does not assume any responsibility or liability for any advice furnished by it, or for the performance or results of any installation or use of the product or of any final product into which the product may be incorporated by the purchaser and/or user.